

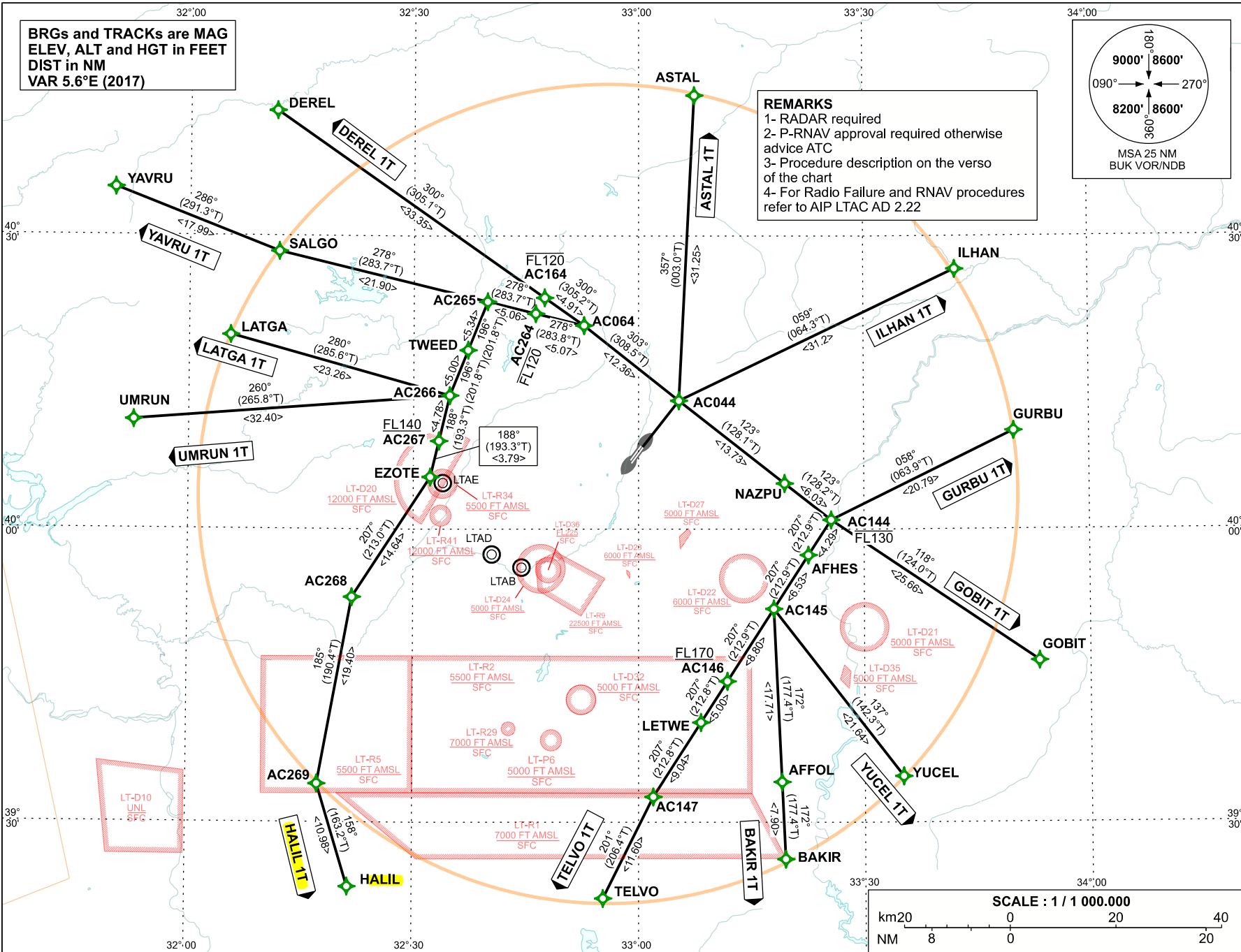
STANDARD DEPARTURE
CHART INSTRUMENT (SID)
ICAO

TRANSITION ALTITUDE
10 000 FT

TWR : 118.1 - 257.8
APP : 119.6 - 119.1

ANKARA/ESENBOĞA
RNAV (GNSS)
RWY 03L/R

CHANGE: THR21 WAYPOINT WITHDRAWN



ESENBOGA AIRPORT RNAV (GNSS) SID RWY 03L/R

Designator	Formal Description	Abbreviated Description
ASTAL 1T	To AC044 on course 032° M max. speed 230 kts, turn left to ASTAL	AC044[M032;K230;-L]-ASTAL
ILHAN 1T	To AC044 on course 032° M max. speed 230 kts, turn right to ILHAN	AC044[M032;K230;-R]-ILHAN
GURBU 1T	To AC044 on course 032° M max. speed 230 kts, turn right to NAZPU to AC144 at or below FL130, turn left to GURBU	AC044[M032;K230;-R]-NAZPU-AC144[F130;-L]-GURBU
GOBIT 1T	To AC044 on course 032° M max. speed 230 kts, turn right to NAZPU to AC144 at or below FL130, turn left to GOBIT	AC044[M032;K230;-R]-NAZPU-AC144[F130;-L]-GOBIT
YUCEL 1T	To AC044 on course 032° M max. speed 230 kts, turn right to NAZPU to AC144 at or below FL130, turn right to AFHES, to AC145, turn left to YUCEL	AC044[M032;K230;-R]-NAZPU-AC144[F130;-R]-AFHES-AC145[L]-YUCEL
BAKIR 1T	To AC044 on course 032° M max. speed 230 kts, turn right to NAZPU to AC144 at or below FL130, turn right to AFHES, to AC145, turn left to AFFOL, to BAKIR	AC044[M032;K230;-R]-NAZPU-AC144[F130;-R]-AFHES-AC145[L]-AFFOL-BAKIR
TELVO 1T	To AC044 on course 032° M max. speed 230 kts, turn right to NAZPU to AC144 at or below FL130, turn right to AFHES, to AC145, to AC146 at or above FL170, to LETWE, to AC147, turn left to TELVO	AC044[M032;K230;-R]-NAZPU-AC144[F130;-R]-AFHES-AC145-AC146[F170+]-LETWE-AC147[L]-TELVO
HALIL 1T	To AC044 on course 032° M max. speed 230 kts, turn left to AC064, turn left to AC264 at or below FL120, to AC265, turn left to TWEED, to AC266, turn left to AC267 at or above F140, to EZOTE, turn right to AC268, turn left to AC269, turn left to HALIL	AC044[M032;K230;-L]-AC064[L]-AC264[F120-]-AC265[L]-TWEED-AC266[L]-AC267[F140+]-EZOTE[R]-AC268[L]-AC269[L]-HALIL
UMRUN 1T	To AC044 on course 032° M max. speed 230 kts, turn left to AC064, turn left to AC264 at or below FL120, to AC265, turn left to TWEED, to AC266, turn right to UMRUN	AC044[M032;K230;-L]-AC064[L]-AC264[F120-]-AC265[L]-TWEED-AC266[R]-UMRUN
LATGA 1T	To AC044 on course 032° M max. speed 230 kts, turn left to AC064, turn left to AC264 at or below FL120, to AC265, turn left to TWEED, to AC266, turn right to LATGA	AC044[M032;K230;-L]-AC064[L]-AC264[F120-]-AC265[L]-TWEED-AC266[R]-LATGA
YAVRU 1T	To AC044 on course 032° M max. speed 230 kts, turn left to AC064, turn left to AC264 at or below FL120, to AC265, to SALGO, turn right to YAVRU	AC044[M032;K230;-L]-AC064[L]-AC264[F120-]-AC265-SALGO[R]-YAVRU
DEREL 1T	To AC044 on course 032° M max. speed 230 kts, turn left to AC064, turn left to AC164 at or below FL120, to DEREL	AC044[M032;K230;-L]-AC064[L]-AC164[F120-]-DEREL

Note: For all SIDs Minimum Climb Gradient 5%(304FT/NM) up to 8500 Feet.

Type	Fix identifier (Waypoint name)	Latitude	Longitude
FlyBy	AC044	40:13:12.39 N	033:05:22.56 E
FlyBy	NAZPU	40:04:42.95 N	033:19:27.16 E
FlyBy	AC144	40:00:58.55 N	033:25:37.20 E
FlyBy	AFHES	39:57:22.47 N	033:22:35.28 E
FlyBy	AC145	39:51:52.76 N	033:17:59.16 E
FlyBy	EZOTE	40:05:20.97 N	032:32:15.54 E
FlyBy	AFFOL	39:34:10.08 N	033:19:00.71 E
FlyBy	LETWE	39:40:16.36 N	033:08:16.66 E
FlyBy	AC267	40:09:02.46 N	032:33:23.87 E
FlyBy	AC268	39:53:03.54 N	032:21:53.80 E
FlyBy	AC269	39:33:57.41 N	032:17:22.78 E
FlyBy	AC146	39:44:28.90 N	033:11:47.18 E
FlyBy	AC147	39:32:39.73 N	033:01:57.33 E
FlyBy	AC064	40:20:53.96 N	032:52:43.67 E
FlyBy	AC264	40:22:06.50 N	032:46:17.03 E
FlyBy	AC265	40:23:18.51 N	032:39:51.05 E

Type	Fix identifier (Waypoint name)	Latitude	Longitude
FlyBy	TWEED	40:18:20.73 N	032:37:15.53 E
FlyBy	AC266	40:13:41.78 N	032:34:50.21 E
FlyBy	AC164	40:23:43.64 N	032:47:28.55 E
FlyBy	ASTAL	40:44:26.00 N	033:07:28.00 E
FlyBy	GURBU	40:10:06.58 N	033:49:58.00 E
FlyBy	ILHAN	40:26:38.00 N	033:42:13.00 E
FlyBy	GOBIT	39:46:34.07 N	033:53:12.95 E
FlyBy	YUCEL	39:34:44.00 N	033:35:07.00 E
FlyBy	BAKIR	39:26:16.00 N	033:19:28.00 E
FlyBy	DEREL	40:42:50.00 N	032:11:36.00 E
FlyBy	TELVO	39:22:16.00 N	032:55:18.00 E
FlyBy	HALIL	39:23:26.00 N	032:21:28.00 E
FlyBy	UMRUN	40:11:09.89 N	031:52:40.52 E
FlyBy	LATGA	40:19:53.00 N	032:05:32.00 E
FlyBy	SALGO	40:28:26.00 N	032:11:58.00 E
FlyBy	YAVRU	40:34:56.00 N	031:49:58.00 E